

Program Brochure 2025



PG Program

Project Management & BIM Advance

*A holistic approach for civil engineer to get in to current
MNC'S demand & entrepreneur*



**Live
6 Months**



**10+
Project**



**Technical &
Nontechnical**



**8+ Core Industrial
Software**



**Life Time
Career support**

*Enroll Today
Become Project Manager with BIM Skill*

Project Management & BIM Advance

PG Certification

- BIM in Structure Design & Construction Coordination
- Construction Project Management & Data visualization
- Exposure to global BIM standards and documentation
- Proficiency in 10+ BIM software
- Career assistance and Placement
- 10+ Live Projects (Building, Bridges & Industrial)

Triple Certification



PG Certification in Project Management & BIM Advance

Course Duration-06 month - 110+ hrs

1000+
Student

15+
Countries

50+
Recruiters

5+
University
MOU

Expertise in
structure & BIM

ISO Certified
Skill India
ACEE - Under
process

300+
International
projects

INTRODUCTION

we are designer engineer architecture planner technical specialists and trainer. we operate in the innovation and revolutionary changing field of designer and engineering construction installation and infrastructure educational services rank top in relate with civil/structure/infrastructure



We have a global community of engineers, technician and expert to deliver quality of training and services

community of 10000+ and still counting
Our trainee are from South east Asia
Europe, Australia and UAE.

Our corporate training program and engineering educational services ranked top in INDIA and all over the world by most recognized organizations. We provide courses relate with civil/structural/infrastructure engineering.

ABOUT PROGRAM

Project Management

PG Program in Project Management & BIM Advance carries various learning steps that involve in details operation of managing Infrastructure Projects i.e Building, Bridge, Road and others. Learning with Live Project Theory and Latest software based things. Due to high technical enhancement in Project management in this Program we will Introduce Various software i.e Bexel Manager Syncro-Pro, Naviswork, Power BI , Primavera P6 and others.

Specialist. Real challenge for Engineers and technical specialist are increasing day by day due to project complexity and environment factor by adapting data driven technology this course enable you to accept that challenges.

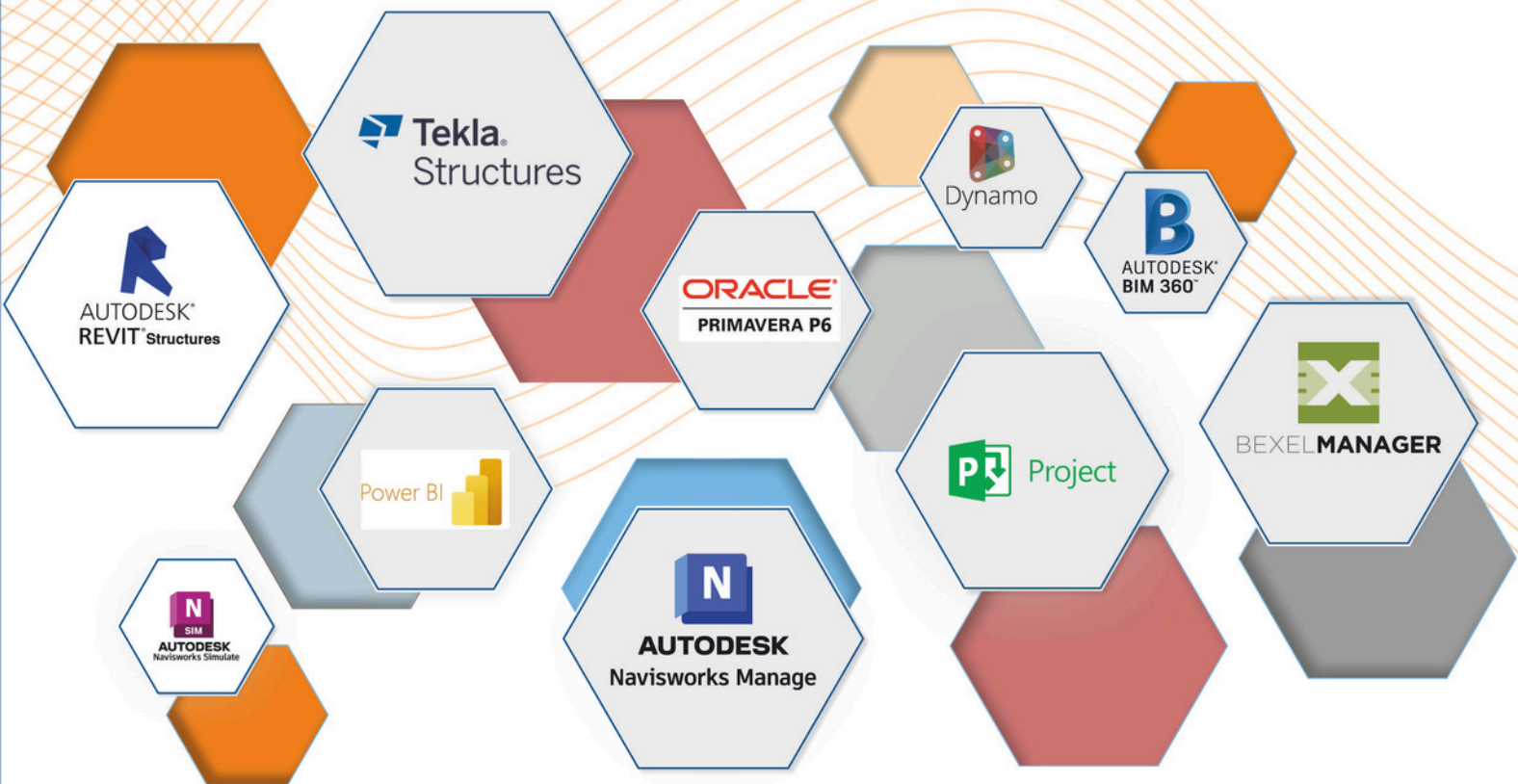
What is BIM?

Building Information Modelling (BIM) is the foundation of digital transformation in the architecture, engineering, and construction (AEC) industry. Managing Digital asset of construction industry with Technology, People and Stake Holder, Open all possibility and provide smooth coordination.

Bridge Information Modelling (BIM) is the holistic process of creating and managing information for a built asset. Based on an intelligent model and enabled by a cloud platform, BRIM integrates structured, multi-disciplinary data to produce a digital representation of an asset across its life cycle, from planning and design to construction and operations.

Master 10+ Software and Tool

- Master 10 Software and Tool
- 10+ Live Project
- 100+ hr. of Learning
- 100% Live Session
- Access of Learning Portal for revision



Road Map For Learning

Week
01

Introduction program

Week
02

IT Session

Week
02

Personal Interaction

Week
03-04

Module: 01 (BIM Research)
Revit and Tekla

Week
05-08

Module: 02 (BIM 4D-5D.)
Dynamo

Week
09-14

Module : 03
Project Management
P6,MS Project

Week
15-20

Module:04
PM and BIM (Bixel Manager)

Week
21-24

Module: 05
Power BI
AR-VR and Rendering

Week
25

Assessment

Week
26

Presentation

Week
27

Certification

Week
28

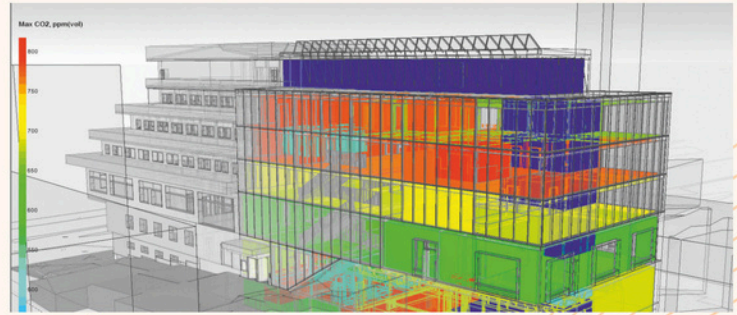
Career Assistance

Module : 2.1 BIM 4D-5D

1.1 BIM Simulation: Autodesk Navisworks

Simulating the progress of the construction activity helps the construction team visualize logistical issues or inefficiencies.

The virtual simulation exposes details such as out-of-sequence work, scheduling conflicts between multiple trades, 'what if' scenarios, and macro-level construction phasing strategies all in order to achieve the optimization of the construction schedule.



1.2 4D Simulation : Real timeline of project and clash detection

1.3 5D Cost Timeline of project (Costing)

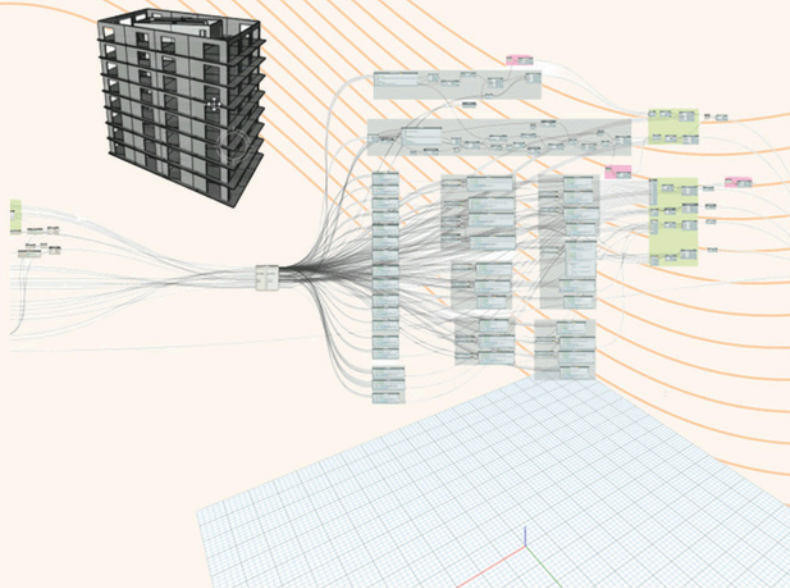
1.4 6D Project life cycle information

Module :2.2 Visual Programing

Software: DYNAMO

1.1 Visual Programing: Establishing visual, systemic, and geometric relationships between the different parts of a drawing is key to the design process. Workflows influence these relationships from the concept stage to final design. Similarly, programming allows us to establish a workflow, but through formalizing algorithms.

1.2 Revit and Dynamo: Using Dynamo, you can work with enhanced BIM capabilities in Revit. Dynamo and



BIM Research

Module: 01 Research and 3D Model Operation

Duration : 20 hr.

1.1 BIM Research and Study:

BIM in AEC industry is new era data driven technology.

Steps involved

Plan: Inform project planning by combining reality capture and real-world data to generate context models of the existing built and natural environment.

Design: During this phase, conceptual design, analysis, detailing and documentation are performed. The preconstruction process begins using BIM data to inform scheduling and logistics.

Build: During this phase, fabrication begins using BIM specifications. Project construction logistics are shared with trades and contractors to ensure optimum timing and efficiency.

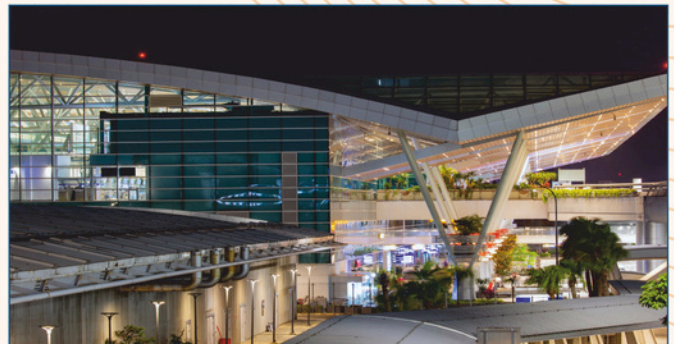
Operate: BIM data carries over to operations and maintenance of finished assets. BIM data can be used down the road for cost-effective renovation or efficient deconstruction too.

BIM Model Understanding

Software : Autodesk Revit, Trimble Tekla

As we need to understand BIM Model and their data to proceed for BIM 4D 5D Clash and Project Management, So we will have Various type of ready Project under consideration.

Project Type : Building Structure, Airport Terminal, Steel Structure & Bridge Structure or Infrastructure Project



Module: 3 Project Management Technical

Duration : 10 hr.

Construction Project Management

Construction project management involves directing and organizing each part of the project life cycle, from ideation to completion. It's a holistic practice with the goal of delivering projects on time and under budget. Construction project management is a complex discipline that requires addressing many important concerns, including cost control, scheduling, procurement, and risk assessment. Project managers interact with all team members involved in a construction project, from architects to owners to contractors.

Module: 3.1 Project Management Handling in P6/MS Project

Duration : 30 hr.

Introduction to Project Management, Introduction to Primavera, Opening a Project, Introduction to Calendar, Work Breakdown Structure, Creating Activities, Task Relationships, Scheduling, Constraints, Resources, Reports, Generating Reports, Project Assessment.

ORACLE®
PRIMAVERA P6



Project

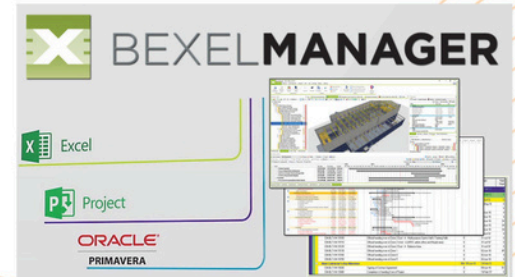


Module: 04 Project Management intergration with BIM 4D 5D AND 6D

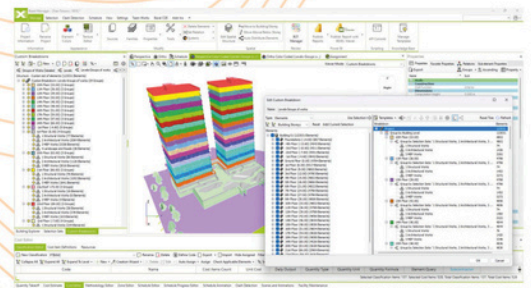
Duration : 35 hr.

Software: Bexel Manager

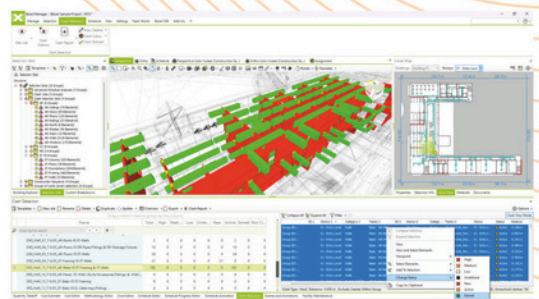
BEXEL Manager is a premium BIM solution providing the most comprehensive set of features for advanced 3D visualization, model data management, clash detection, automated QTO, cost management, smart scheduling and progress monitoring. With extensive data analysis and reporting tools BEXEL Manager empowers all project stakeholders to make informed data-driven decisions based on real-time data.



Smart Scheduling : Advanced 4D BIM scheduling engine designed to bring the functionality of creating fully automated construction schedules and alleviate time consuming, manual sequencing. A smart algorithm finds the optimal solution in terms of minimum construction cost and time and resource balancing even for the most complex projects, containing hundreds of thousands of elements.



Cost Management : A fully integrated 5D BIM Cost Management enables various advanced analyses such as model-based Cost Estimation, Schedule creation and optimization, Construction progress monitoring, and Schedule impact analyses. Cost Management enhances project control by integrating spatial and temporal dimensions with cost data, providing a comprehensive platform for analyses and a more holistic project management



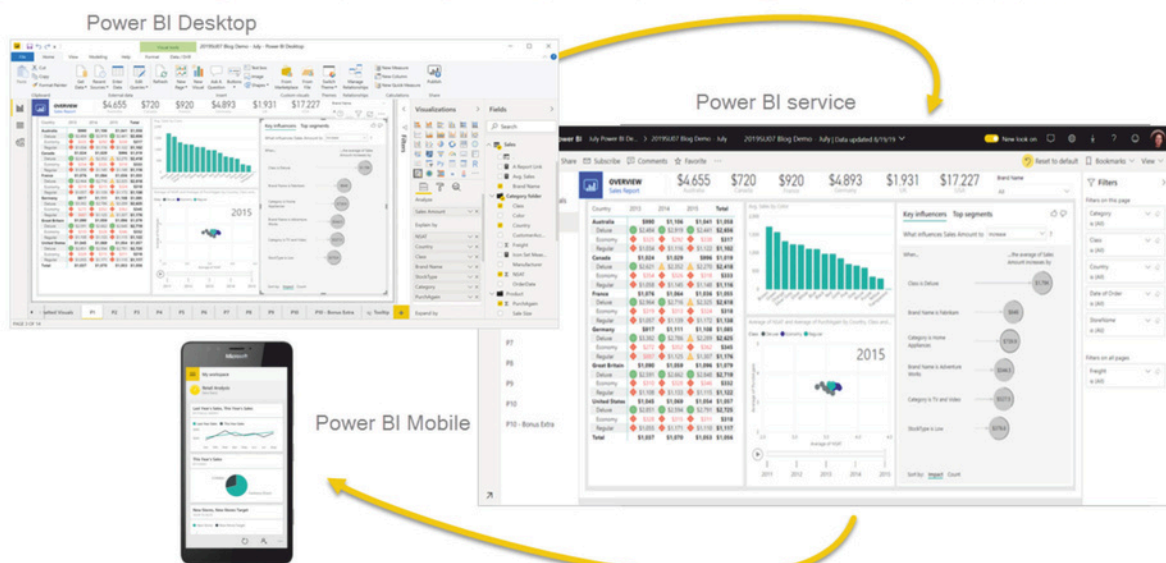
Module: 05 Project Management intergration with BIM 4D 5D AND 6D

Duration : 20 hr.

Software: MS Power BI, Autodesk Construction Cloud, BIM 360

Business Intelligence : Power BI

is a Data Visualization and Business Intelligence tool that converts data from different data sources to interactive dashboards and BI reports. Power BI suite provides multiple software, connector, and services - Power BI desktop, Power BI service based on SaaS, and mobile Power BI apps available for different platforms. These set of services are used by business users to consume data and build BI reports.



5.1 AR: Arguments Reality

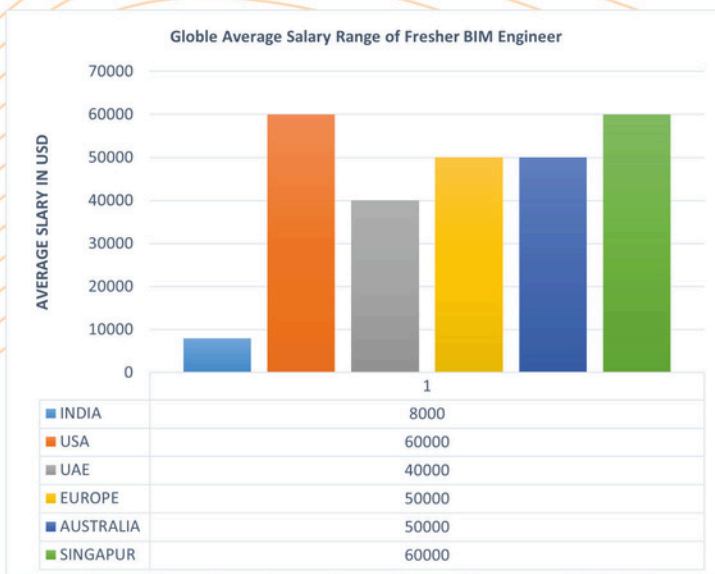
5.2 VR: Virtual Reality

5.3 Scan to BIM: In a Scan to BIM process, a laser scanner is used to capture an accurate 3D scan of the real world conditions on a project. The scan data is then imported into a 3D modelling environment to create either accurate as-built models or to inform the design with the real world conditions.



Career Graph

- **BIM Modeler (Structure+Archi+MEP)**
- **BIM Construction Coordinator**
- **BIM Project Coordinator**
- **BIM Manager**



Global Hiring Company

ARUP

ATKINS

Member of the SNC-Lavalin Group



TATA CONSULTING ENGINEERS LIMITED

Stantec



Kimley»Horn

Expect More. Experience Better.

kpff

Balfour Beatty
Construction

Honeywell

RAMBOLL

FLUOR



INTEGRAL

COWI



Shapoorji Pallonji



SKANSKA

ARCADIS

Design & Consultancy
for urban and
built assets

Jacobs

VINCI

Admission Process



Enrolment Form

A one-on-one chat with our SME to understand your basic knowledge, prior work experience, and your expectations from the course. After your interview assessment,



Interview and offer letter

A one-on-one chat with our SME to understand your basic knowledge, prior work experience, and your expectations from the course. After your interview assessment,



Payment

Based on your interview performance, you would receive an offer letter and an fee payment as per option choosed



Batch Allotment

After the payment formalities, you will be given course credentials and your learning journey will begin!

Key Features:

1. Mode of Program: Online Live
2. Platform : MS Team
3. Duration: 08 Month
4. Recording of live class
5. Access of E-Library
6. 1 Year access of www.academy.structure.live for learning

Eligibility

Bachelor/Master/PHD in civil engineering or relevant work experience in AEC Industry

Program Fee:

INR 75,000/- (including 18% GST)

Other then Indian & African subcontinent : USD 1,200/-

Contact Us:

For further details, please reach out to:

STRUCTUREX PVT. LTD.

+91-9354-7349-46

info@structurex.live

www.structurex.live

Online Program For Civil/Mechanical Program

- ① PG Program in BIM Technology & PM
- ② PG Program in Bridge Design & Technology
- ③ PG Program in Steel Structure & BIM Technology
- ④ PG Program in High Rise & Tall Structure

For more Information Visit



WWW.STRUCTUREX.LIVE



info@structurex.live



+91-9354734946

THANKS FOR BEING WITH US