

# BIM CIVIL-ADVANCE

## BIM CIVIL - ADVANCE

- BIM in Structure Design & Construction Coordination
- Exposure to global BIM standards and documentation
- Proficiency in 7+ BIM software
- Career assistance and Placement
- 10+ Live Projects (Building, Bridges & Industrial)

### Triple Certification



## PG Certification in BIM CIVIL - ADVANCE

Course Duration-6 month - 180 hrs

**1000+**  
Student

**15+**  
Countries

**50+**  
Recruiters

**5+**  
University  
MOU

Expertise in  
structure & BIM

ISO Certified  
Skill India  
ACEE - Under  
process

**300+**  
International  
projects

# INTRODUCTION

we are designer engineer architecture planner technical specialists and trainer. we operate in the innovation and revolutionary changing field of designer and engineering construction installation and infrastructure educational services rank top in relate with civil/structure/infrastructure



We have a global community of engineers, technician and expert to deliver quality of training and services

community of 10000+ and still counting  
Our trainee are from South east Asia  
Europe, Australia and UAE.

Our corporate training program and engineering educational services ranked top in INDIA and all over the world by most recognized organizations. We provide courses relate with civil/structural/infrastructure engineering.



# ABOUT PROGRAM

## BIM CIVIL - ADVANCE

PG Program in BIM CIVIL-ADVANCE is a comprehensive training program which enable you to carrier in different technical positions due to technical advancement in design and engineering worldwide professional qualification are not satisfying current MNC company job demand so structurex department of corporate training design this course for professional, fresh Graduate and Technical

Specialist. Real challenge for Engineers and technical specialist are increasing day by day due to project complexity and environment factor by adapting data driven technology this course enable you to accept that challenges

## Why BIM CIVIL?

Civil Engineer and Technician are Backbone of AEC Industry. Recent change in Technology and their implementation engineer's need to upgrade themself .

STRUCTUREX Bring a complete Approach and AEC Lead program to master skills in various type of projects i.e Building, Bridge and Steel. With more than 7 Software and tools i.e Autodesk Revit, Naviswork, Tekla structure BIM 360, Trimble connect , Dynamo and other.

Bridge Information Modelling (BIM) is the holistic process of creating and managing information for a built asset. Based on an intelligent model and enabled by a cloud platform, BRIM integrates structured, multi-disciplinary data to produce a digital representation of an asset across its life cycle, from planning and design to construction and operations.

# PROGRAM PROCESS & OUTLINE

**STRUCTUREX Pvt. Ltd.** Online program learning providing best project based and career oriented training to fresher and experienced engineer. We focus on core and latest technological approach to provide best career oriented training. Quality management and critical engineering is our backbone. Fresh collage graduate have a great opportunity to start career and get placed in their desire company, **With our PGD, MASTER and SKILL Certification Program.**



Interview and  
offer letter



Personal  
coaching



Group  
formation



Live session  
E-Learning



Technical setup



Conceptual  
and theory



National & International  
conferences



Software and  
tools training



Technical  
Workshop



Live  
Projects



Assesment

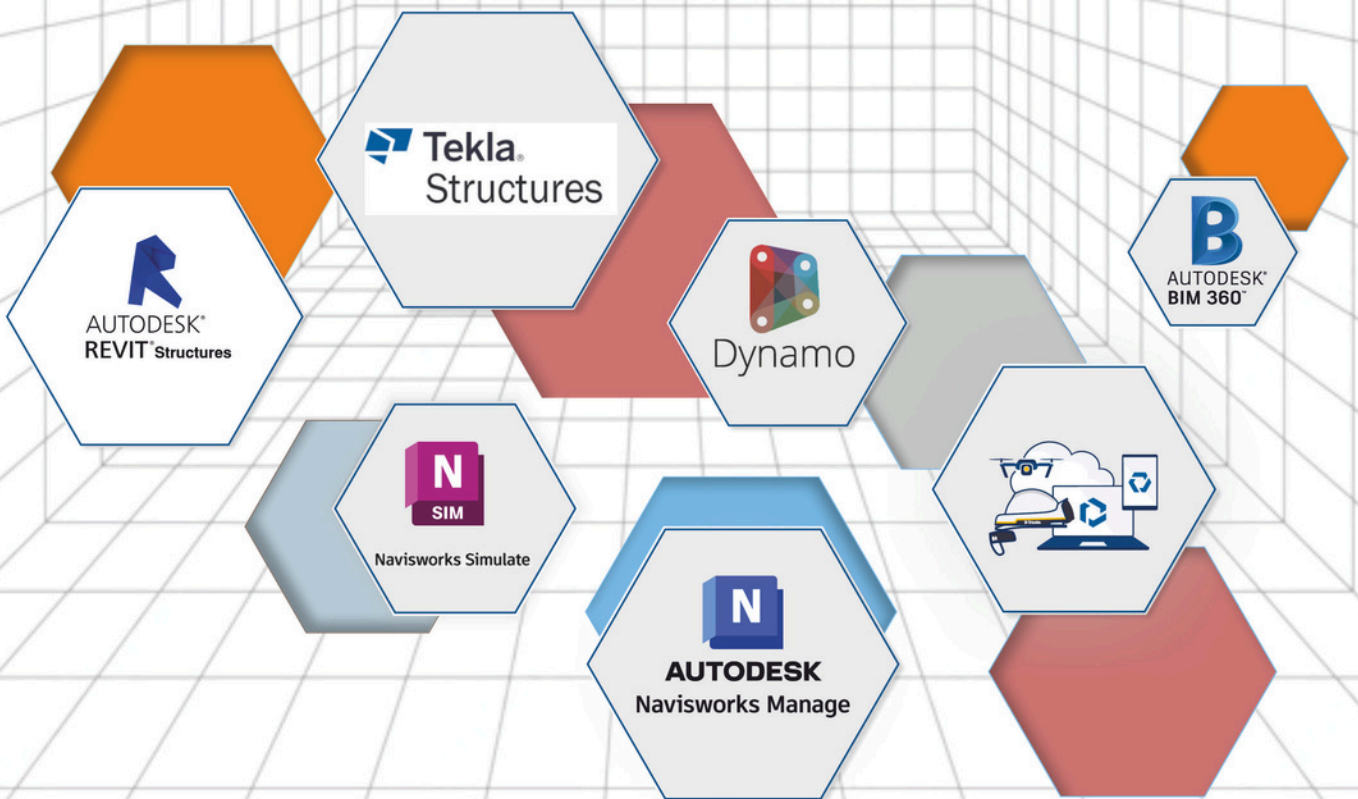


Certification



# Master 07+ Software and Tool

- Master 07 Software and Tool
- 6+ Live Project
- 150+ hr. of Learning
- 100% Live Session
- Access of Learning Portal for revision



## Module: 01 BIM Research

**Module: 01 BIM Research**  
**Duration : 10 hr.**

- 1.1 BIM Research and Study:  
BIM in AEC industry is new era data driven technology.
- 1.2 ISO Standard for BIM
- 1.3 Understanding Project Implementation



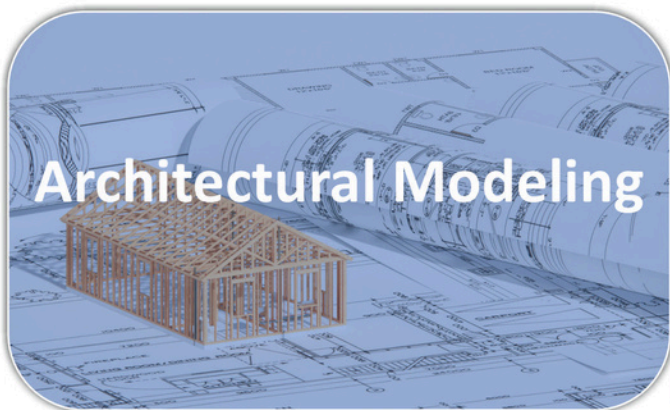
### Steps involved

**Plan:** Inform project planning by combining reality capture and real-world data to generate context models of the existing built and natural environment.

**Design:** During this phase, conceptual design, analysis, detailing and documentation are performed. The preconstruction process begins using BIM data to inform scheduling and logistics.

**Build:** During this phase, fabrication begins using BIM specifications. Project construction logistics are shared with trades and contractors to ensure optimum timing and efficiency.

**Operate:** BIM data carries over to operations and maintenance of finished assets. BIM data can be used down the road for cost-effective renovation or efficient deconstruction too.



**AUTODESK**  
**REVIT**

## Module :02 Autodesk Revit - Architecture

### Modelling 1.2 BIM: Autodesk Revit

**Duration: 20 hr.**

#### Architecture Data:

Design to documentation: Place walls, doors, and windows. Generate floor plans, elevations, sections schedules, 2D and 3D views, and renderings quickly and accurately.

#### Analysis:

Optimize building performance in early-stage design, run cost estimates, and monitor performance over the lifetime of the project and the building.

#### Visualization:

Generate photorealistic renderings. Create documentation with cutaways, 3D views, and stereo panoramas to extend your design to virtual reality.

#### Coordination and collaboration:

Share, sync, and iterate designs with engineers and contractors in Revit in a unified project environment.



## Module : 03 Autodesk Revit-Structure

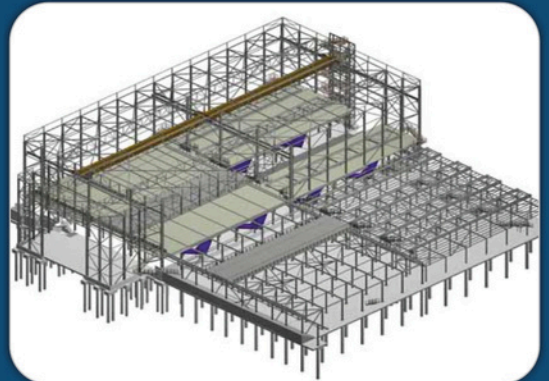
### Module: 03 Structural Modeling

Duration : 40 hr.

BIM Structural Modelling is the core for any BIM Engineer.

This Module cover various project type Live Projects:

1. Building structure (RCC)
2. Bridge structure
3. Steel Structure



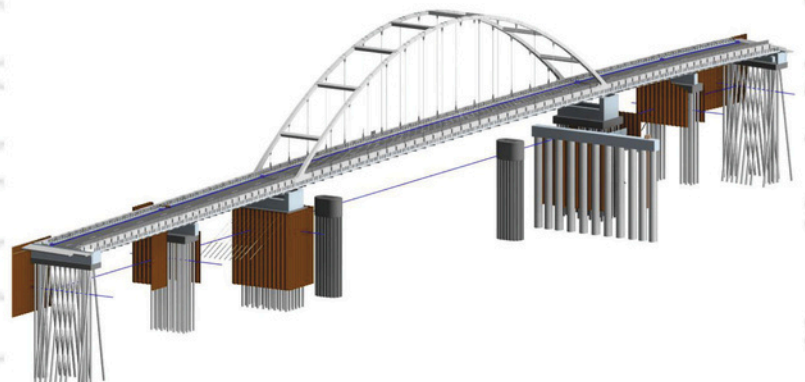
### Structure Data Modeling & Documentation

**Concrete reinforcement:** Model 3D concrete reinforcement in an advanced BIM environment. Create detailed reinforcement designs and shop drawing documentation with debar bending schedules.

**Design to detail work flows:** Connect steel design and detailing workflow. Define design intent for a higher level of detail for steel connections in the Revit model.

**Documentation:** Create more accurate, detailed documentation of steel and concrete designs.

**Analysis:** Conduct structural analysis and export to analysis and design applications with the analytical model while you create the physical model in Revit.



## Steel and Bridge Structure Modeling

Software: Tekla structure

Duration: 40 hr.

### Steel Structure :

Learning different type of steel structure PEB / Warehouse and others .

Modeling, Detailing, Cost estimation, Fabrication and shop drawing, Connection modeling and their component creation.

### Bridge Structure :

Learning different type of Bridge structure Guider RC/ Steel truss bridge.

Modeling, Detailing, Cost estimation, Fabrication and shop drawing, Connection modeling and their component creation.

### Why Tekla structure?

#### BrIM is about data standardization

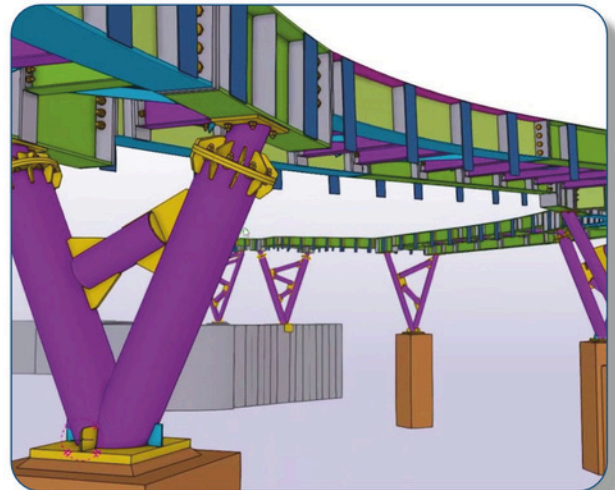
Transparent communication and high-level collaboration are the key drivers for both BIM and BrIM. Making the most out of the tools requires standardization. Standardized information can be used and kept in usable format when forwarded in the process which helps to integrate the project stages.

#### Secondly: BrIM is about technology

BIM and BrIM can be connected to other modern technologies, such as 3D printing, autonomous construction, big data analysis, augmented reality and virtualization, the Internet of Things (IoT), wireless monitoring, and cloud and real-time collaboration.

#### Most of all: BrIM is about people

The BrIM transformation is streamlining processes and developing corporate cultures toward model-based practices. However, the most important (and probably most challenging) aspect is to take care of people in the transformation.





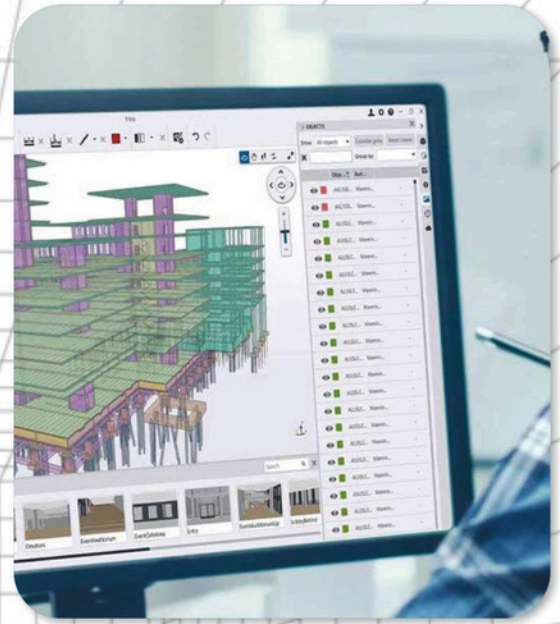
# Module : 05 Common Data Environment(CDE)

## Common Data Environment (CDE)

Duration: 10 hr.

### Trimble connect:

Trimble Connect is a cloud-based collaboration platform with real time status-sharing. Trimble Connect is available for web, Windows, mobile and mixed reality.

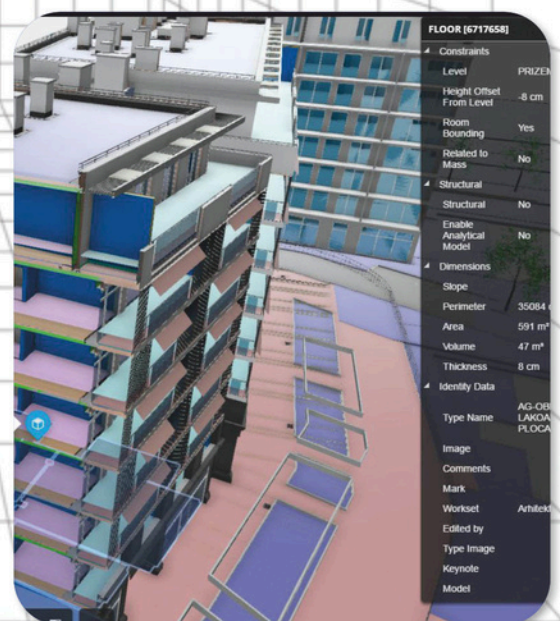


## Common Data Environment (CDE)

Duration: 10 hr.

### Autodesk BIM 360 :

BIM 360 is an Autodesk cloud-based solution that allows project teams to effectively work in a collaborative environment. In the AEC industry, it connects all project stakeholders to execute projects from conceptual design through construction and ultimately project turnover.



FLOOR (6717658)	
Constraints	
Level	PRIZEN
Height Offset From Level	-0 cm
Room Bounding	Yes
Related to Mass	No
Structural	
Structural	No
Enable Analytical Model	No
Dimensions	
Slope	
Perimeter	35084
Area	591 m <sup>2</sup>
Volume	47 m <sup>3</sup>
Thickness	8 cm
Identify Data	
Type Name	AG-OR LAKDA FLOOR
Image	
Comments	
Mark	
Workset	Arhitek
Edited by	
Type Image	
Keynote	
Model	



## Module : 06 BIM 4D-54

### Modelling : 06 BIM 4D-54

#### 1.1 BIM Simulation: Autodesk Navisworks

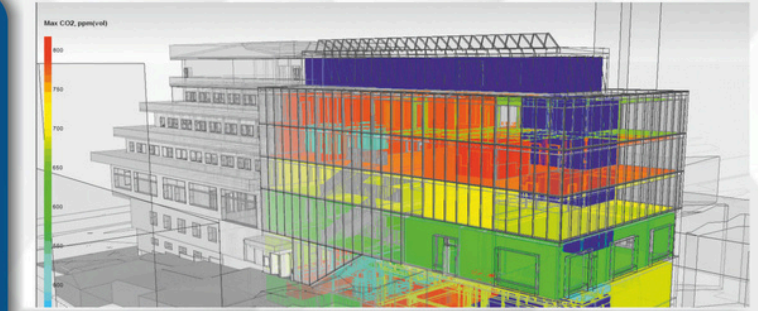
Simulating the progress of the construction activity helps the construction team visualize logistical issues or inefficiencies

The virtual simulation exposes details such as out-of-sequence work, scheduling conflicts between multiple trades, 'what if' scenarios, and macro-level construction phasing strategies all in order to achieve the optimization of the construction schedule.

#### 1.2 4D Simulation : Real timeline of project and clash detection

#### 1.3 5D Cost Timeline of project (Costing)

#### 1.4 6D Project life cycle information



## Module : 07 Visual Programming

### Software: DYNAMO

**1.1 Visual Programming:** Establishing visual, systemic, and geometric relationships between the different parts of a drawing is key to the design process. Workflows influence these relationships from the concept stage to final design. Similarly, programming allows us to establish a workflow, but through formalizing algorithms.

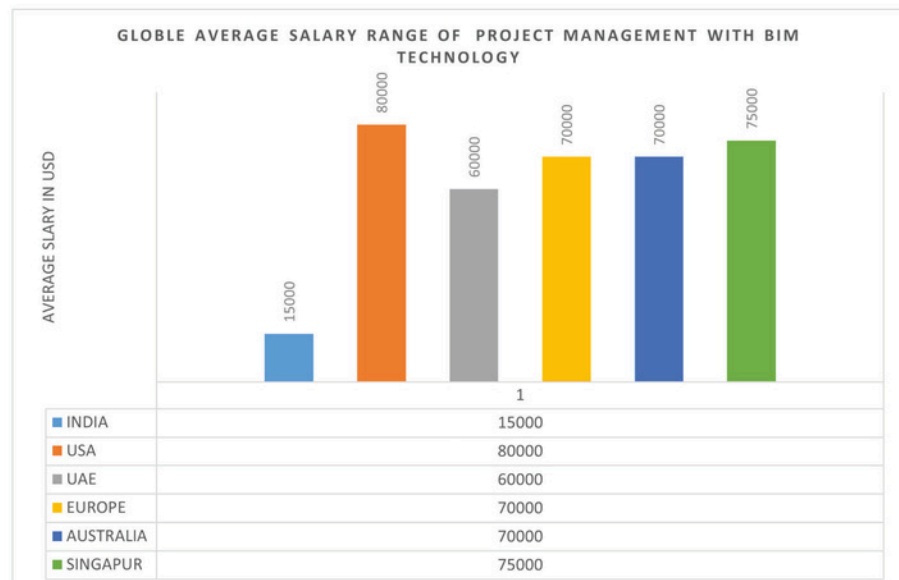
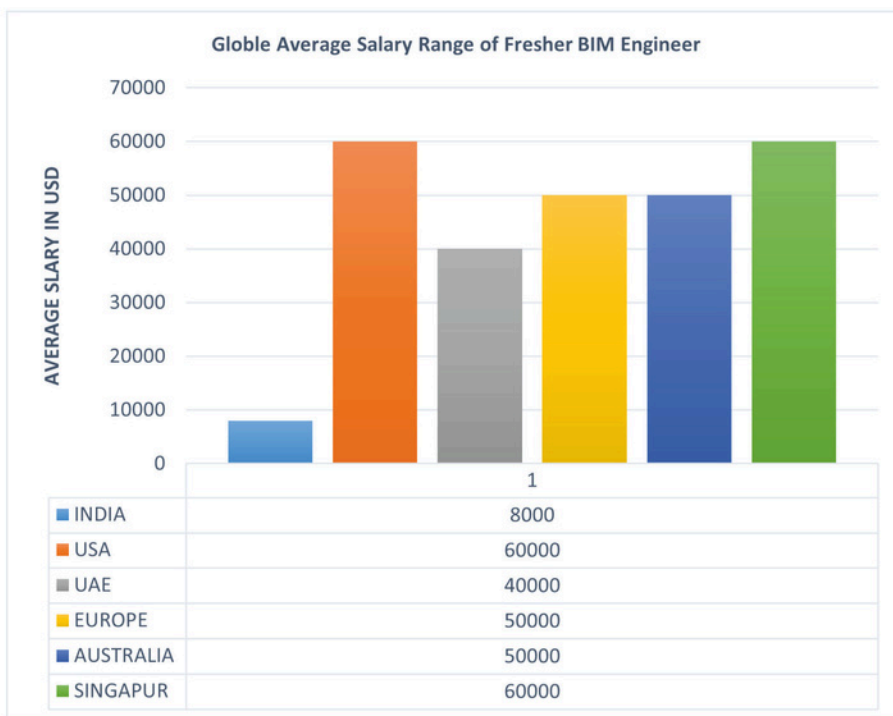
**1.2 Revit and Dynamo:** Using Dynamo, you can work with enhanced BIM capabilities in Revit. Dynamo and

Revit can be utilized together to model and analyze complex geometries, automate repetitive processes, minimize human error, and export data to Excel files and other file-types not typically supported by Revit. Dynamo can make the design process more efficient, with an intuitive interface and many pre-made scripting libraries available as well.



# Career After Program

- **BIM -Structural engineer**
- **BIM -Steel modeler & Detailer**
- **BIM -Bridge Modeler**
- **BIM - Coordinator**



# PROGRAM SCHEDULE

**Week  
01**

Introduction program

**Week  
19**

Module:05  
CDE (Common Data Envirn.)

**Week  
02**

IT Session

**Week  
20-21**

Module:06  
BIM 4D-5D

**Week  
02**

Personal Interaction

**Week  
22-23**

Module:07  
Visual Programing

**Week  
02**

Module: 01 BIM Intro

**Week  
24**

Project Review

**Week  
03-09**

Module: 02 - 03  
BIM Modeling-Revit

**Week  
24-25**

Assessment

**Week  
10-19**

Module : 04  
BIM Modeling-Tekla

**Week  
26-30**

Career Assistance



# EXCLUSIVE CAREER SUPPORT

## Live Career-Oriented Webinars

Live webinar sessions that include curriculum and career services walkthrough to help learners understand their learning objective and expectations of hiring managers.



## Leadership Skill Development Sessions

Recurring training sessions with experts to help learners develop Interpersonal and Leadership Skills.



## 1-on-1 Career Mentoring Sessions

One-on-one Career Mentoring sessions on how to develop the right skills and attitude to secure a dream job.



## Live Career-Oriented Webinars

Live webinar sessions that include curriculum and career services walkthrough to help learners understand their learning objective and expectations of hiring managers.



## Live Career-Oriented Webinars

Live webinar sessions that include curriculum and career services walkthrough to help learners understand their learning objective and expectations of hiring managers.



## Live Career-Oriented Webinars

Live webinar sessions that include curriculum and career services walkthrough to help learners understand their learning objective and expectations of hiring managers.



# FEATURES , ELIGIBILITY & FEE STRUCTURE

## Key Features:

1. Mode of Program: Online Live
2. Platform : MS-TEAM
3. Duration: 06 Month
4. Recording of live class
5. Access of E-Library
6. 1 Year access of [www.academy.structure.live](http://www.academy.structure.live) for learning

## Eligibility

Bachelor/Master/PHD in civil engineering or relevant work experience in AEC Industry

## Program Fee:

INR 70,000/- (including 18% GST)

Other than Indian & African subcontinent : USD 1,500/-

Maximum 2 installment applicable

For One Time Payment option : 10% Fee Wavier

## Contact Us:

For further details, please reach out to:

+91-9354-7349-46

[info@structurex.live](mailto:info@structurex.live)

[www.structurex.live](http://www.structurex.live)



# Online Program For Civil/Structural Architecture & MEP

- 1 PG in BIM Modelling & Coordination
- 2 PG in BIM Management
- 3 PG in BIM Architecture - Advance
- 4 PG in BIM MEP - Advance
- 5 PG in Bridge Design & BrIM Technology
- 6 PG in Steel Structure & BIM Technology
- 7 PG in RCC Structure & BIM Technology
- 8 PG in High Rise & Tall Structure

*For more Information Visit*



**WWW.STRUCTUREX.LIVE**

 [info@structurex.live](mailto:info@structurex.live)

 +91-9354734946

**THANKS FOR BEING WITH US**